

<http://www.designboom.com/architecture/toti-semerano-corten-steel-wall-salento-italy-07-06-2016/>
Jul 06, 2016

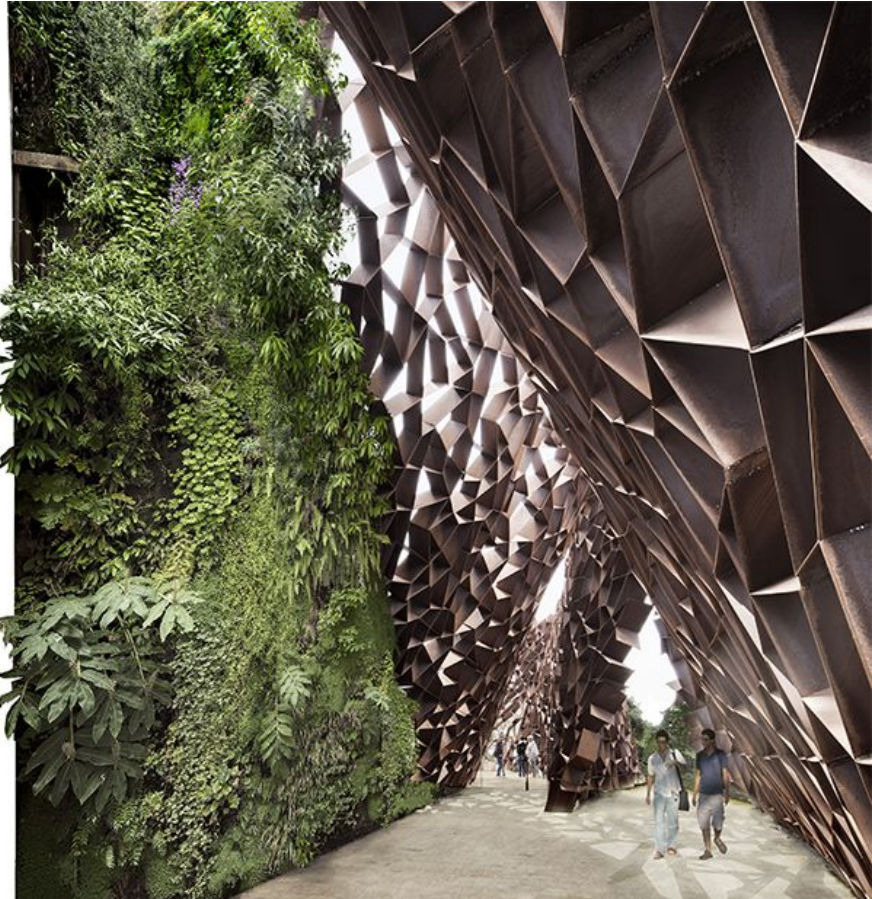


Jul 06, 2016

toti semerano constructs an irregular corten steel wall in salento, italy

toti semerano constructs an irregular corten steel wall in salento, italy

corten steel is a group of steel alloys which are exposed to natural weather conditions for several years in order to form a rust-like appearance. this material has been chosen by toti semerano as the architectural element for a detached wall which will circle a hotel in salento, italy.

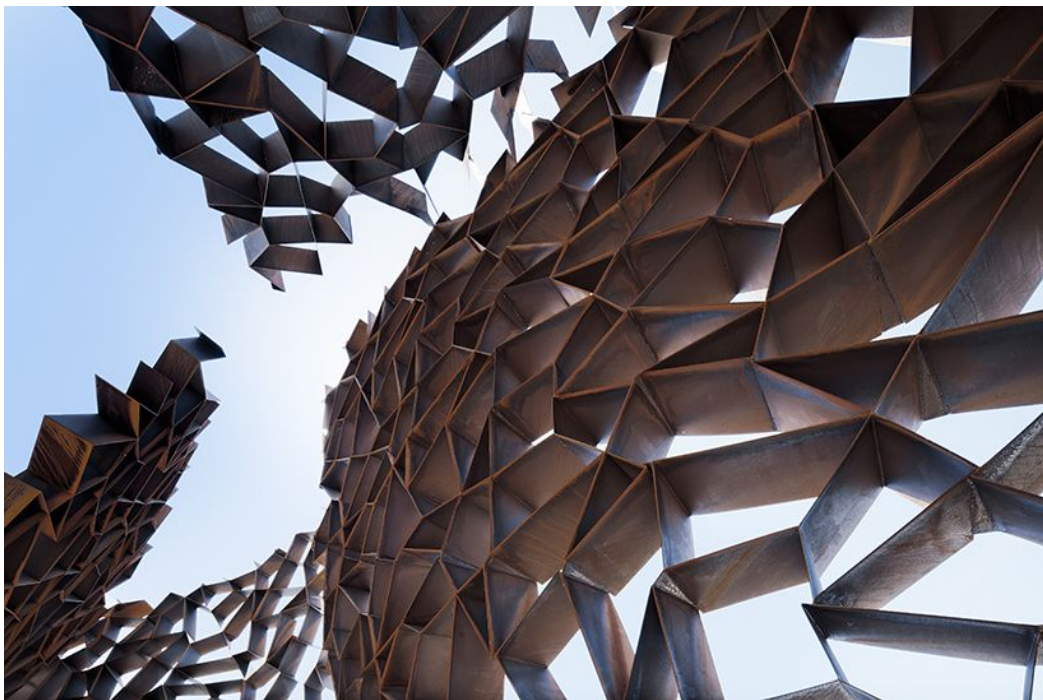


the building will use a 700 m² plant wall in collaboration with botanist patrick blanc

the prototype, which is currently in progress, uses a basic star shape which is repeated throughout the structure. the effect creates an abstract honeycomb appearance, reflecting shapes found within nature. once built, the construction will be complimented by a 700 m² plant wall in collaboration with botanist patrick blanc. the 110 x 9 meter installation by toti semerano will envelope the existing building on site, forming a shaded area for visitors to rest and enjoy the decorative scene surrounding them.



the corten spatial structure



the structure uses a basic star shape



an individual part is lifted by crane



the detached wall will circle a hotel in salento, italy



the construction is welded together



the project is currently under construction

THE ELEMENTS



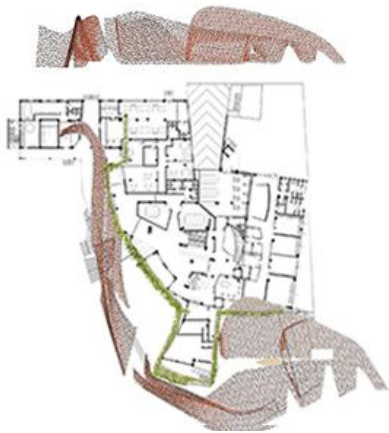
1 Passive plant wall with a system of a total water recovery



2 Self-bearing corten-steel shading structure



3 Energy production plant with photovoltaic modules

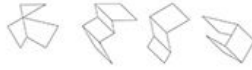


the three elements

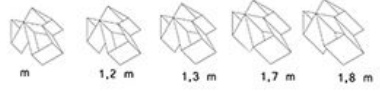
THE MODULE



2D



3D different deep



rotation 60°

mirror + rotation 240°

rotation 0°

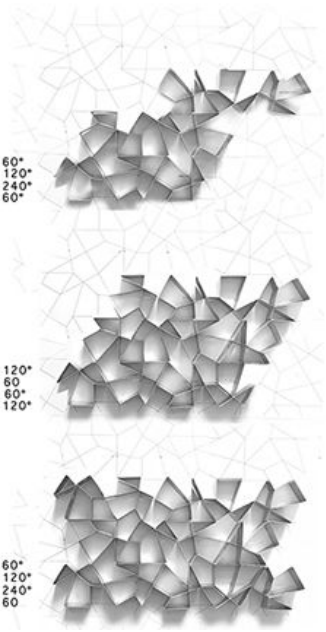
mir.+rot. 240°
mir.+rot. 180°

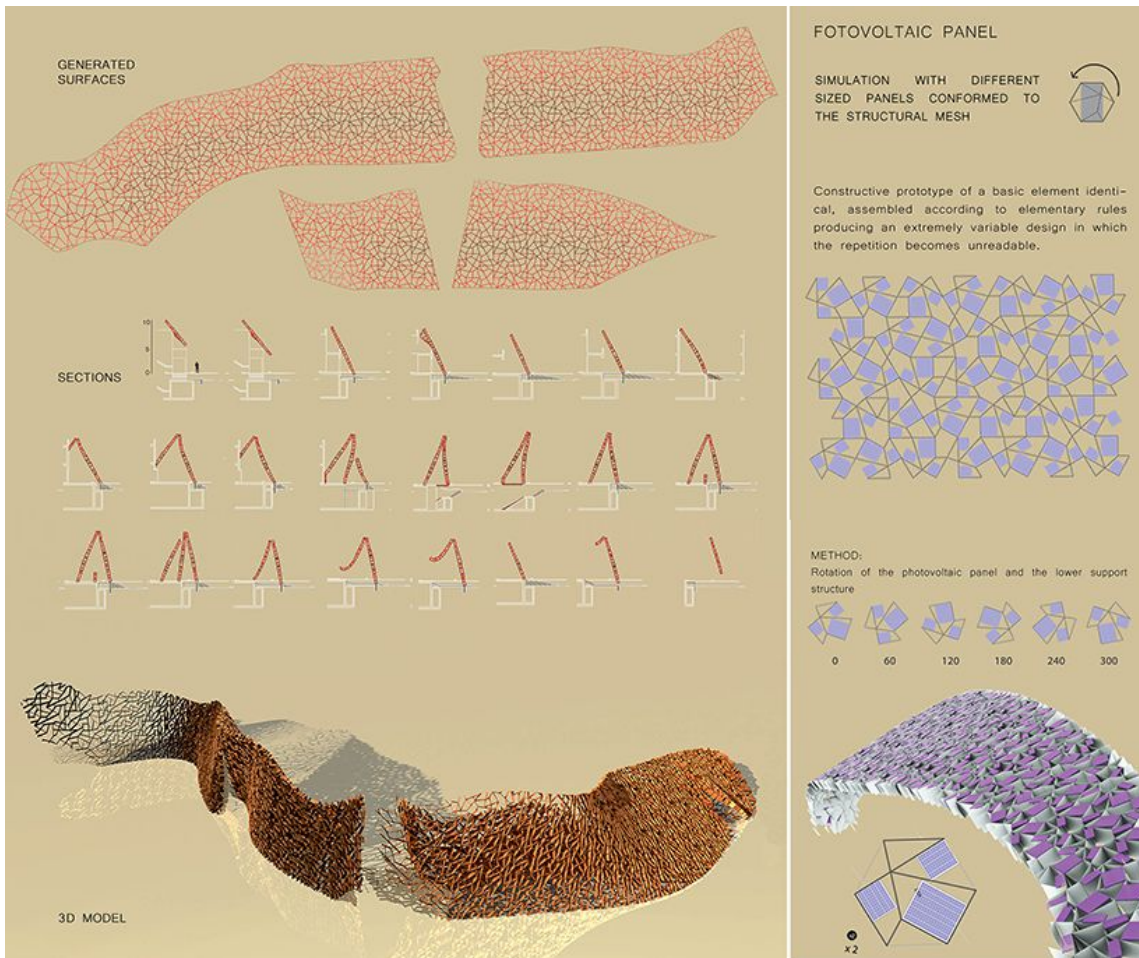


mir.+rot. 60°
rot. 120°
rot. 240°
mir.+rot. 60°

mir.+rot. 120°
mir.+rot. 60°
rot. 60°
rot. 120°

rot. 60°
rot. 120°
rot. 240°
mir.+rot. 60°





the intersection of fotovoltaic modules in the corten structure



interior space



art hotel foyer and conference hall

project info:

architects: toti semerano

design team: andrea piscopo, giuseppe scarabello, stefano antonello, simone romaro, gunar thom, mauro aschedamini, iride filoni, salvatore musarò, stefano sabato

sustainability: echomaterico_ collaborative design solution

location: melissano, lecce, italy

client: private

status: work in progress

photography: carlo carossio

edited by: hollie smith | designboom